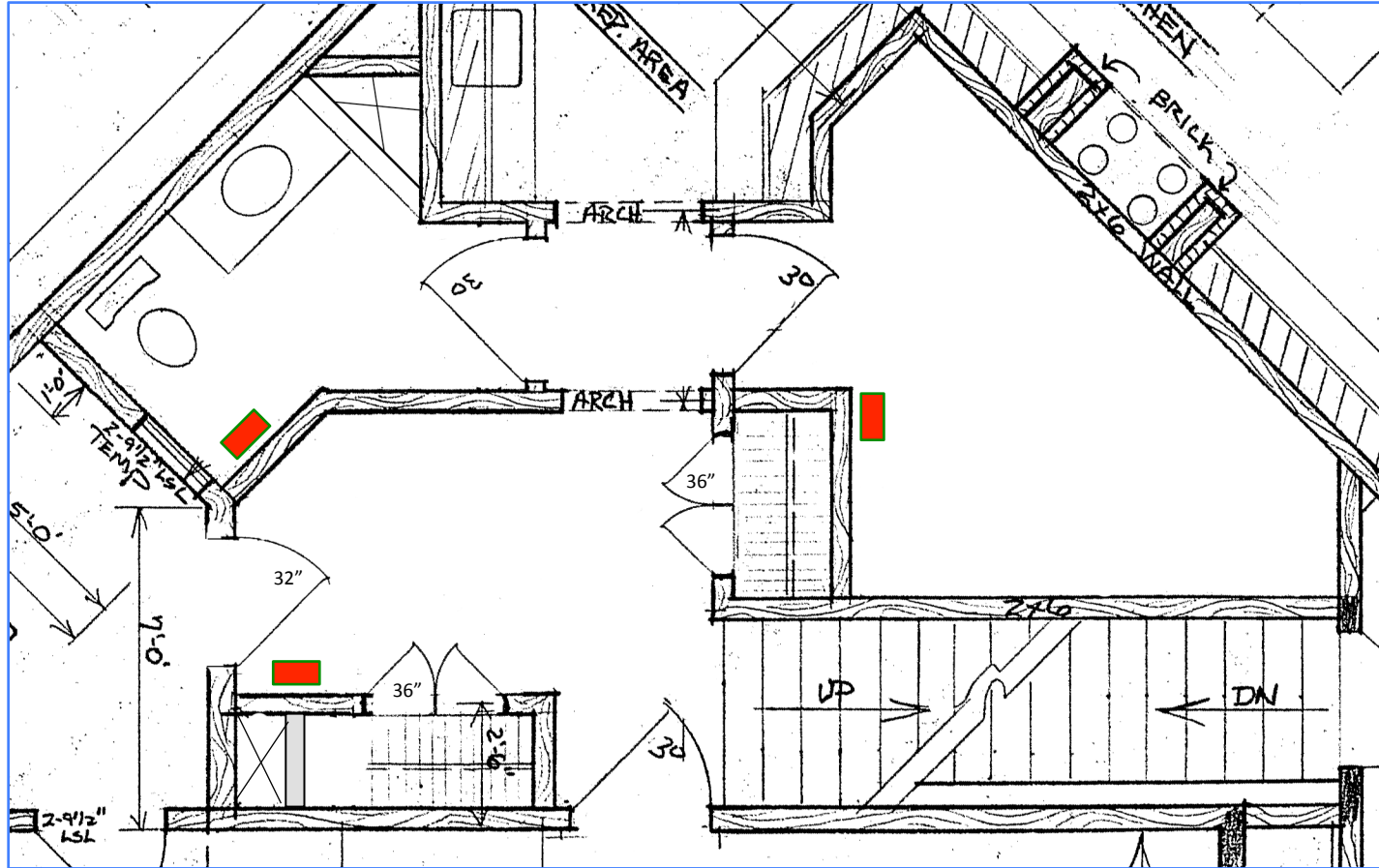


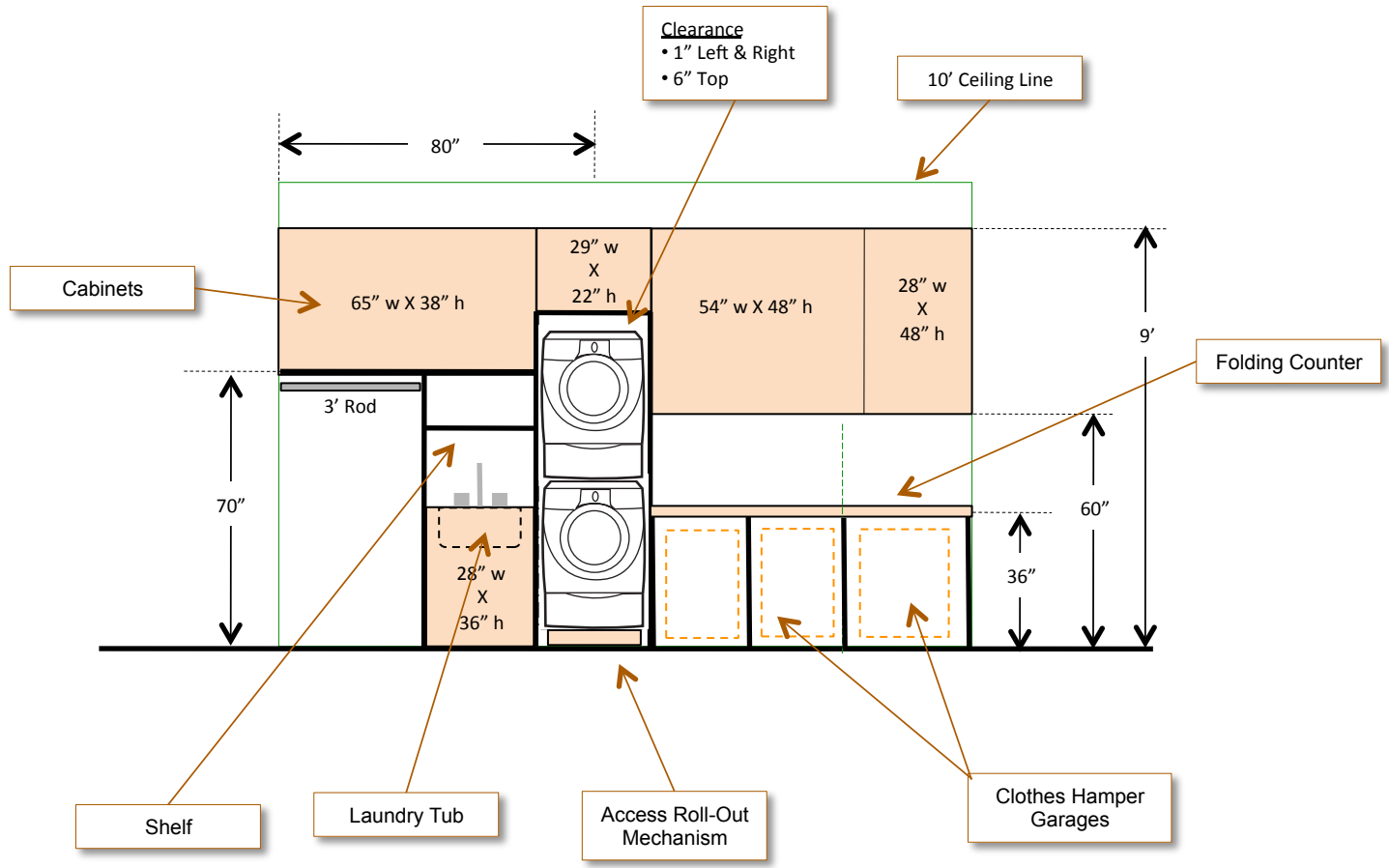
Floor Plan





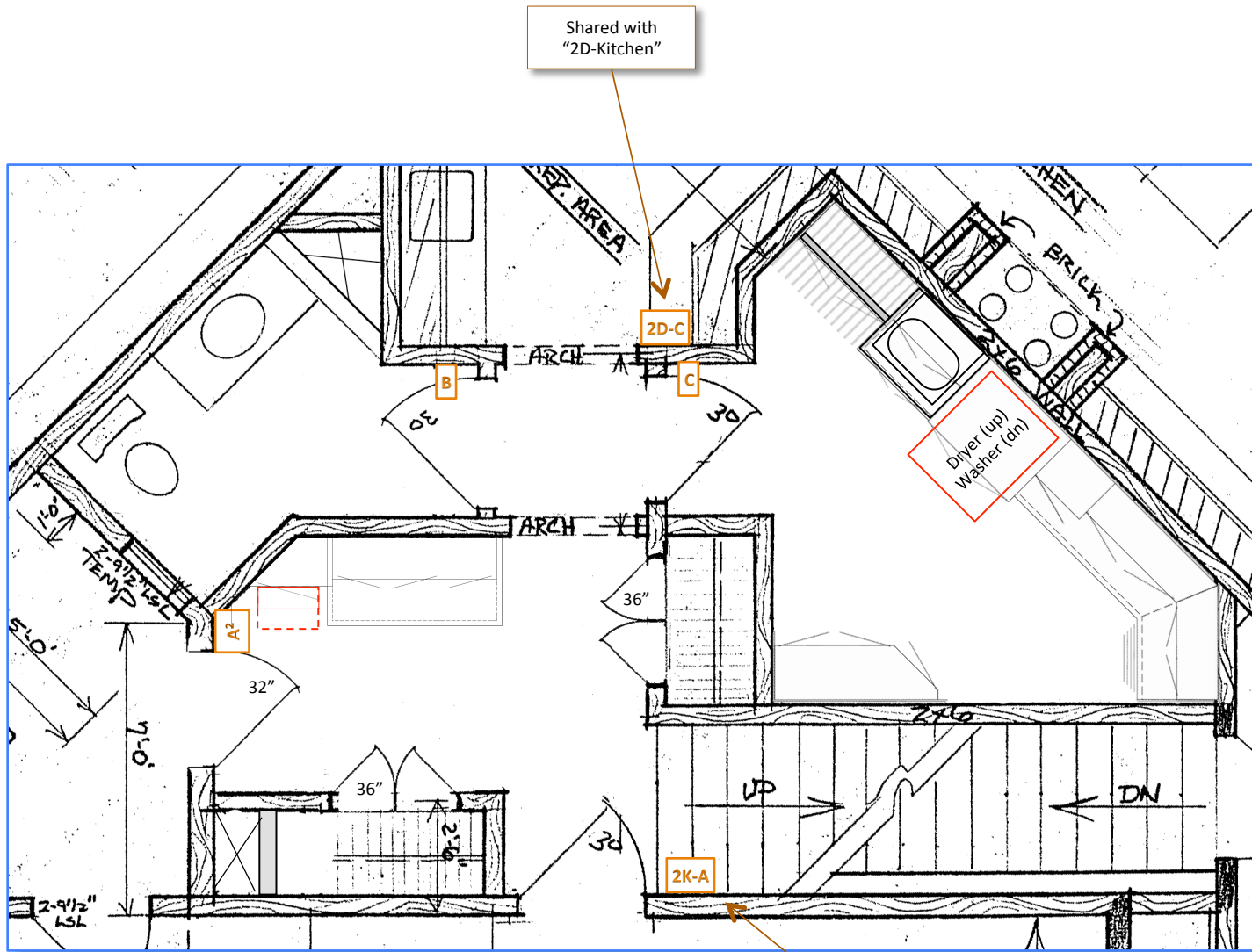
HVAC Duct Locations

■ = Supply Air Duct
■ = Return Air Duct



Laundry Long-Wall Elevation



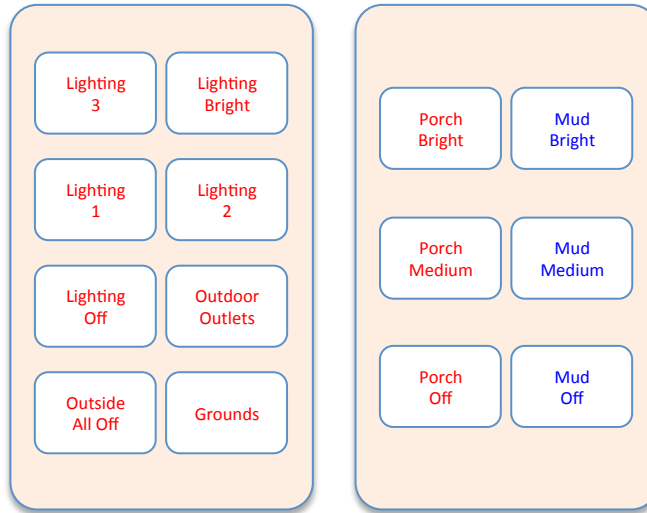


X = Switch Cluster

Lighting Controls

Keypad Location 2E-A (U & D)

Mud Room, Right of Outside Door



Cables
2 – Orange/2
1 – White/7

Keypad Location 2E-B

Powder Room



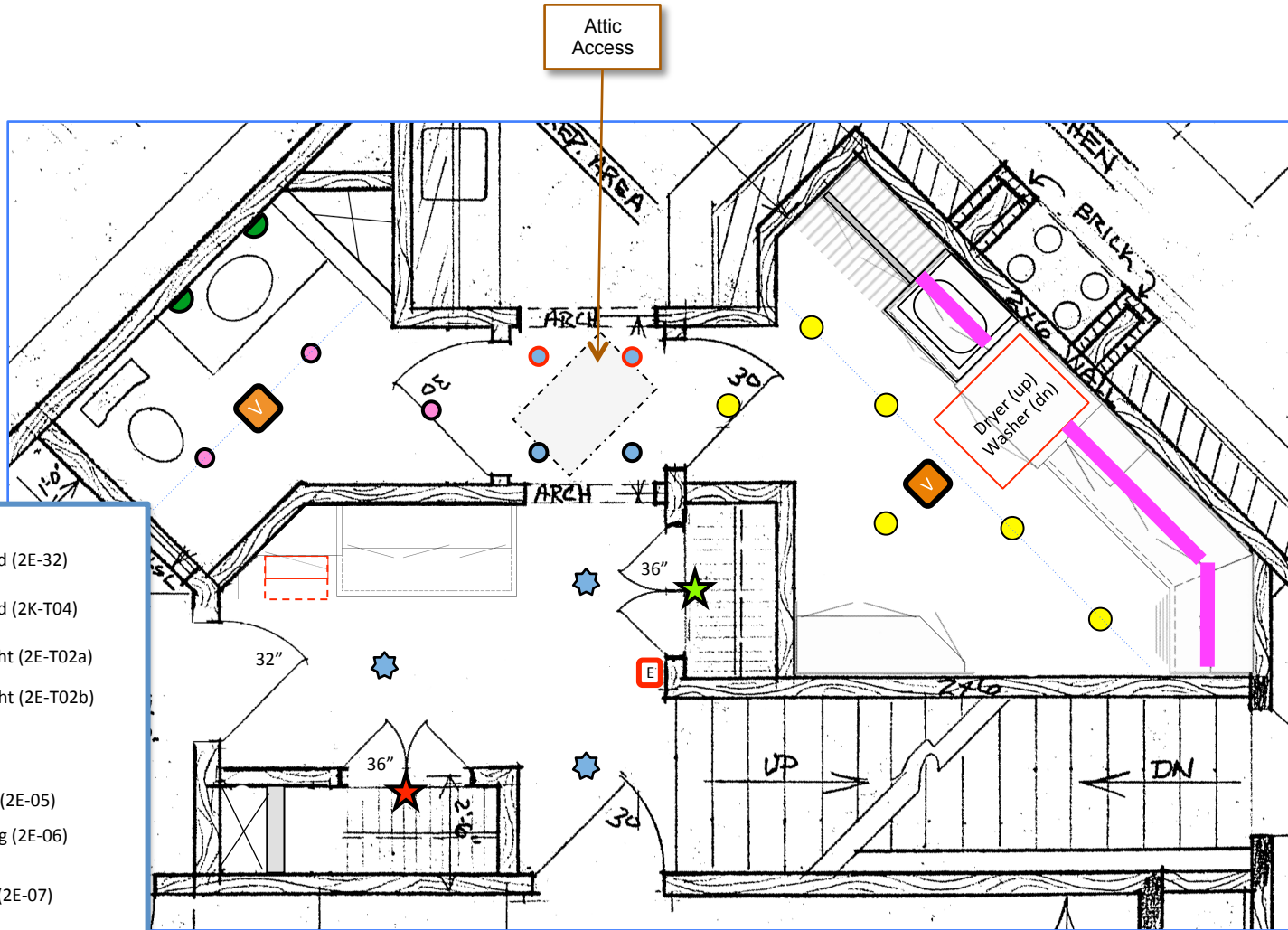
Cables
1 – Orange/1

Keypad Location 2E-C

Laundry Room



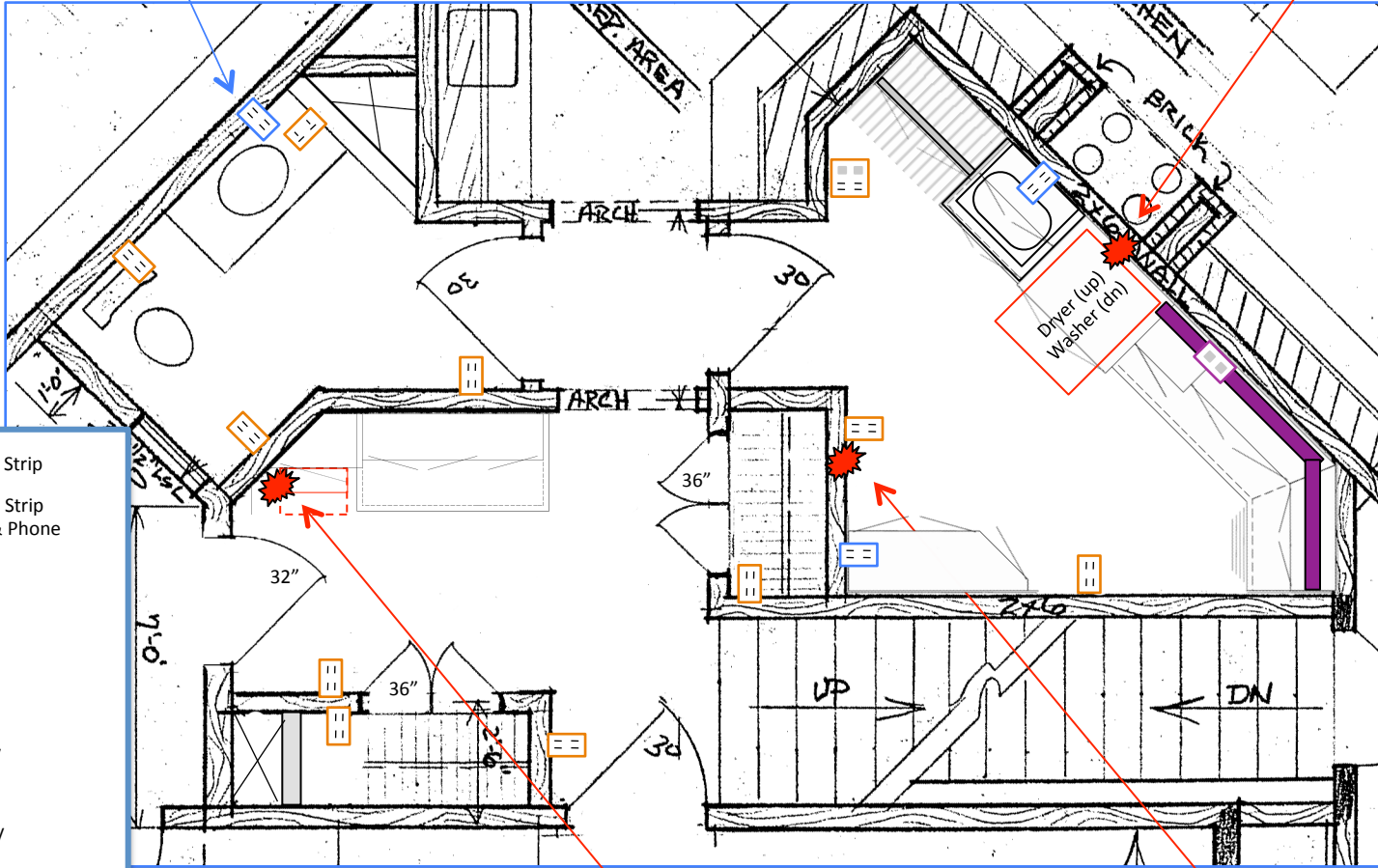
Cables
1 – Orange/1










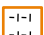



- = 4" LED Recessed (2E-32)
- = 6" LED Recessed (2K-T04)
- = 3" LED Puck Light (2E-T02a)
- = 3" LED Puck Light (2E-T02b)
- ◐ = Sconce (2E-04)
- ★ = Surface Fixture (2E-05)
- ▬ = Counter Lighting (2E-06) (~ 9 lineal ft)
- ★ = Closet Lighting (2E-07)
- ★ = Closet Lighting (2E-08)
- V = Common Exhaust Fan
- E = Standby Light

Inside Vanity

Washer: 120 V @ 15/20 A (outlet)
Dryer: 240 V @ 30 A (4 wire) &
½" Gas Supply



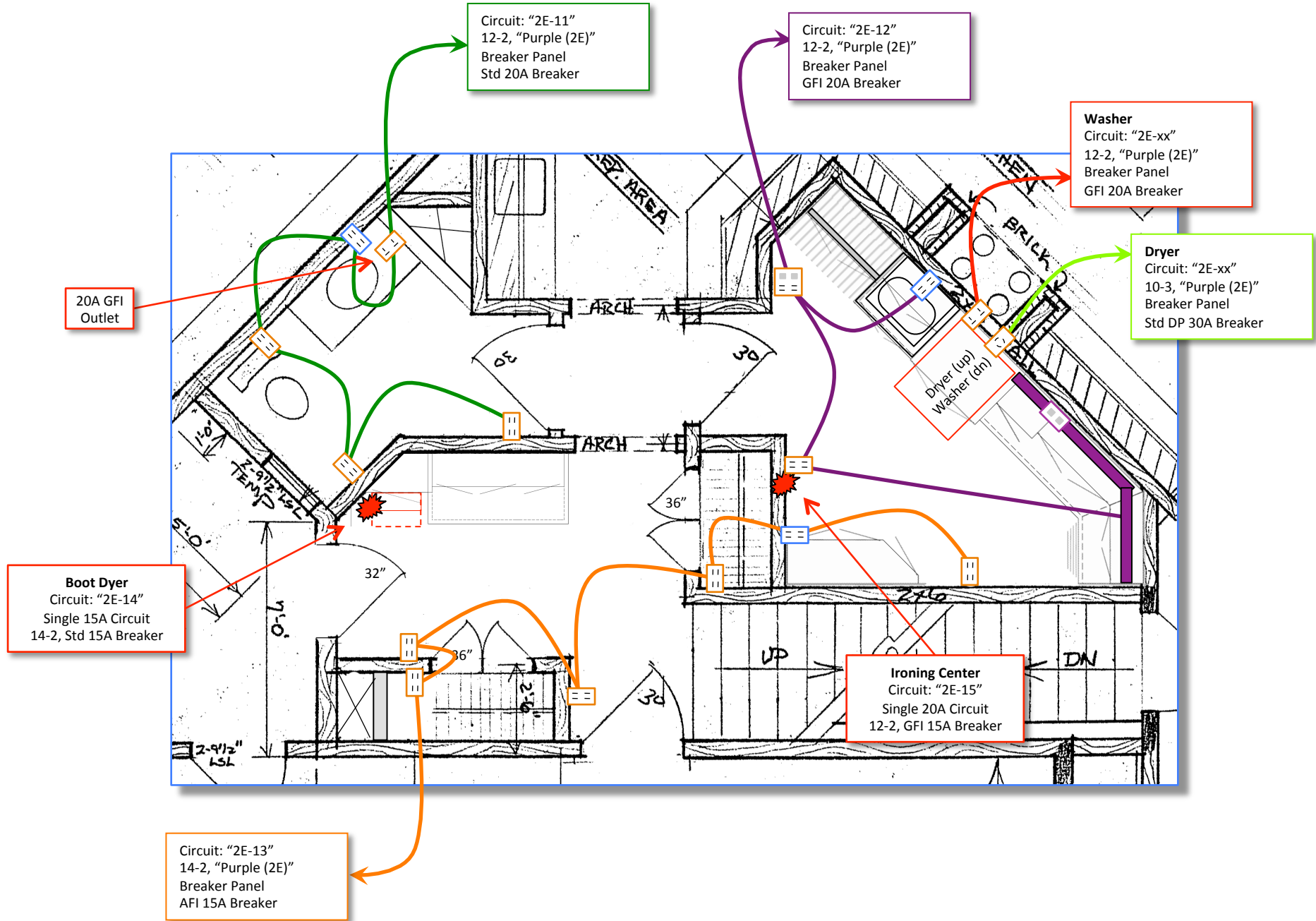
-  = 20A Outlet Strip
-  = 20A Outlet Strip with LAN & Phone
-  = 15A Duplex
-  = 15A Duplex (Concealed)
-  = 15A Quad
-  = 15A Duplex / LAN / Phone
-  = 20A Duplex / LAN / Phone
-  = 20A Duplex
-  = 20A Duplex (Concealed)
-  = 20A Quad
-  = 20A Quad / LAN / Phone

Dryer (up)
Washer (dn)

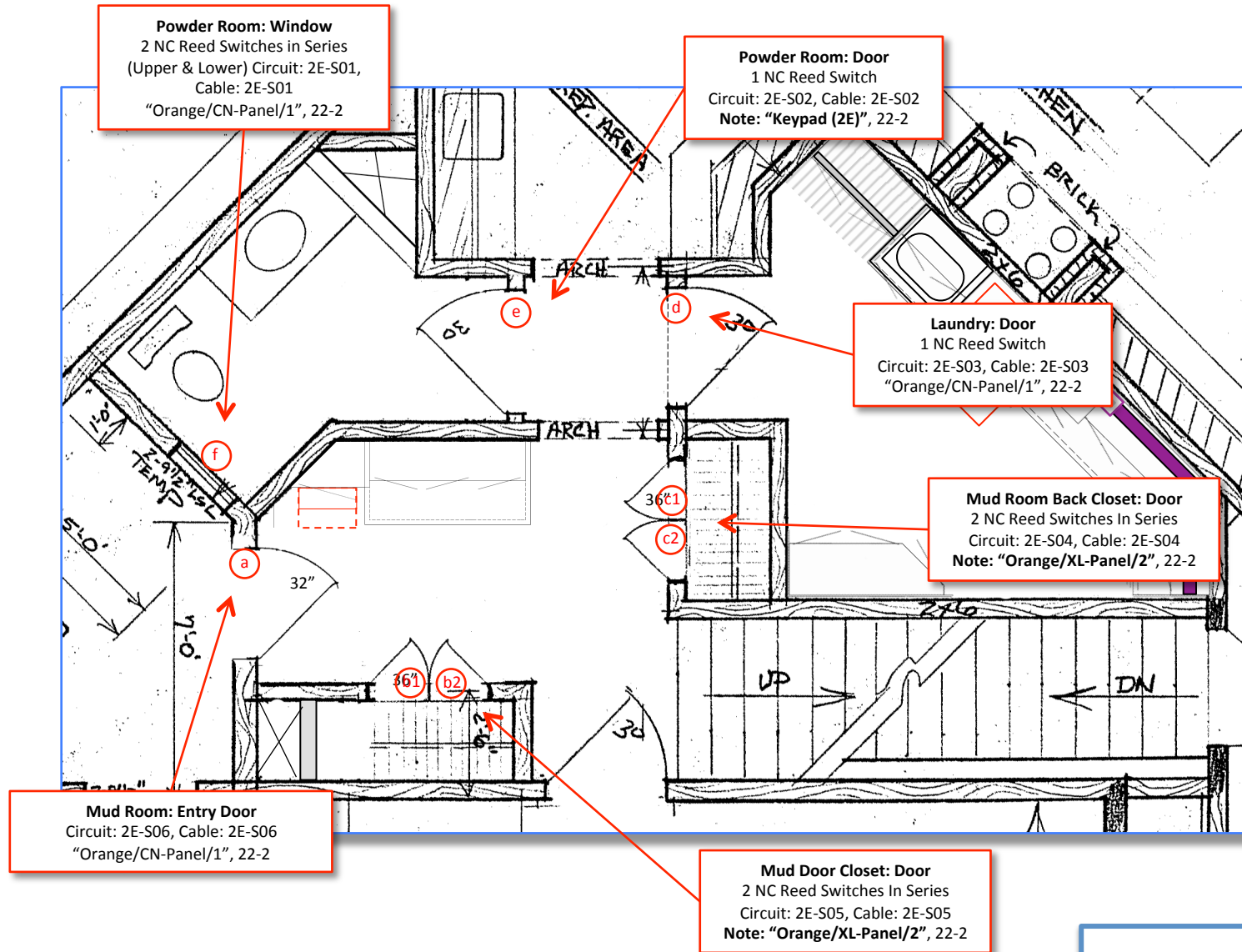
Boot Dryer: 120 V @ 15 A (wired)

Ironing Center: 120 V @ 15/20 A (wired)

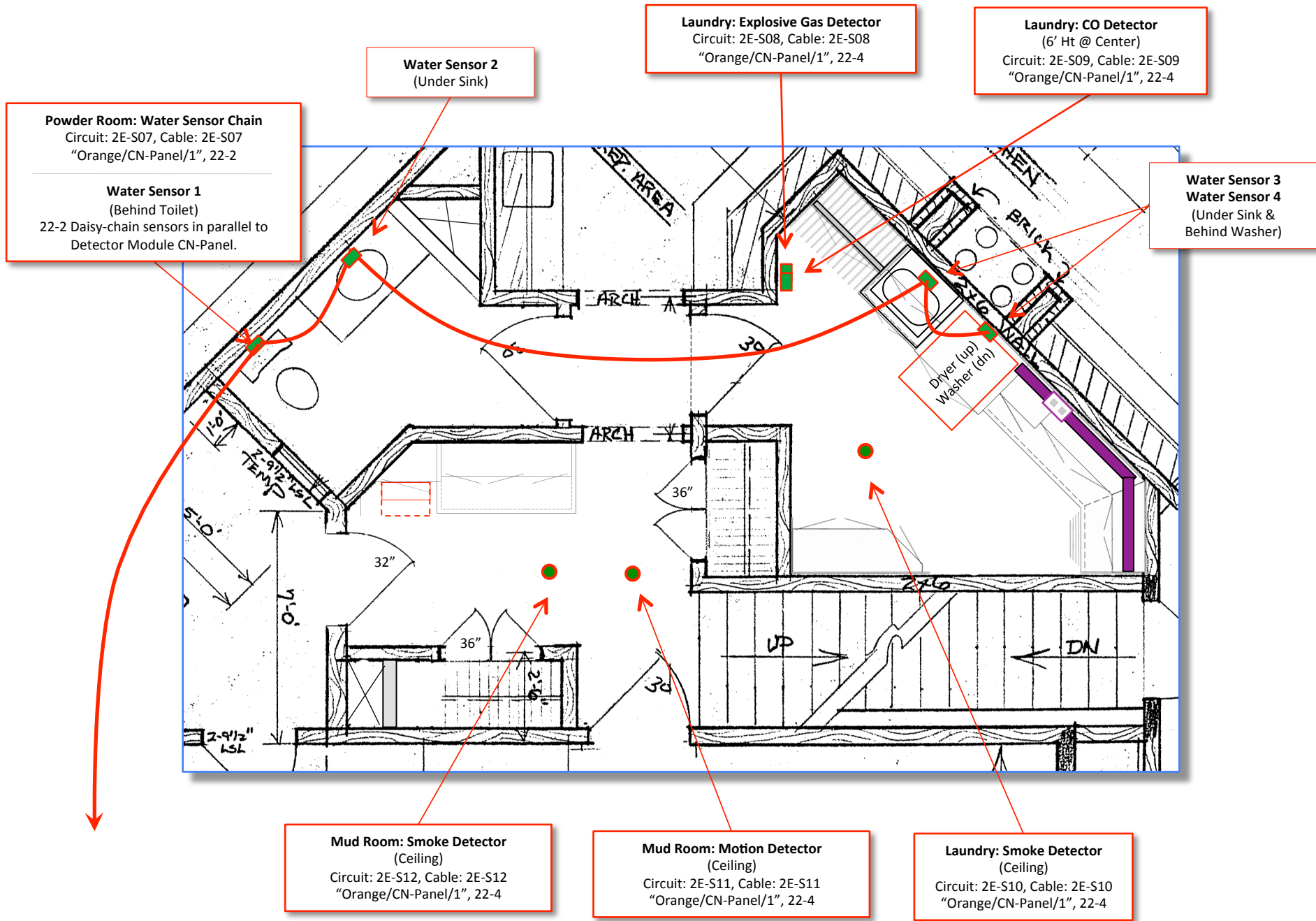
Power



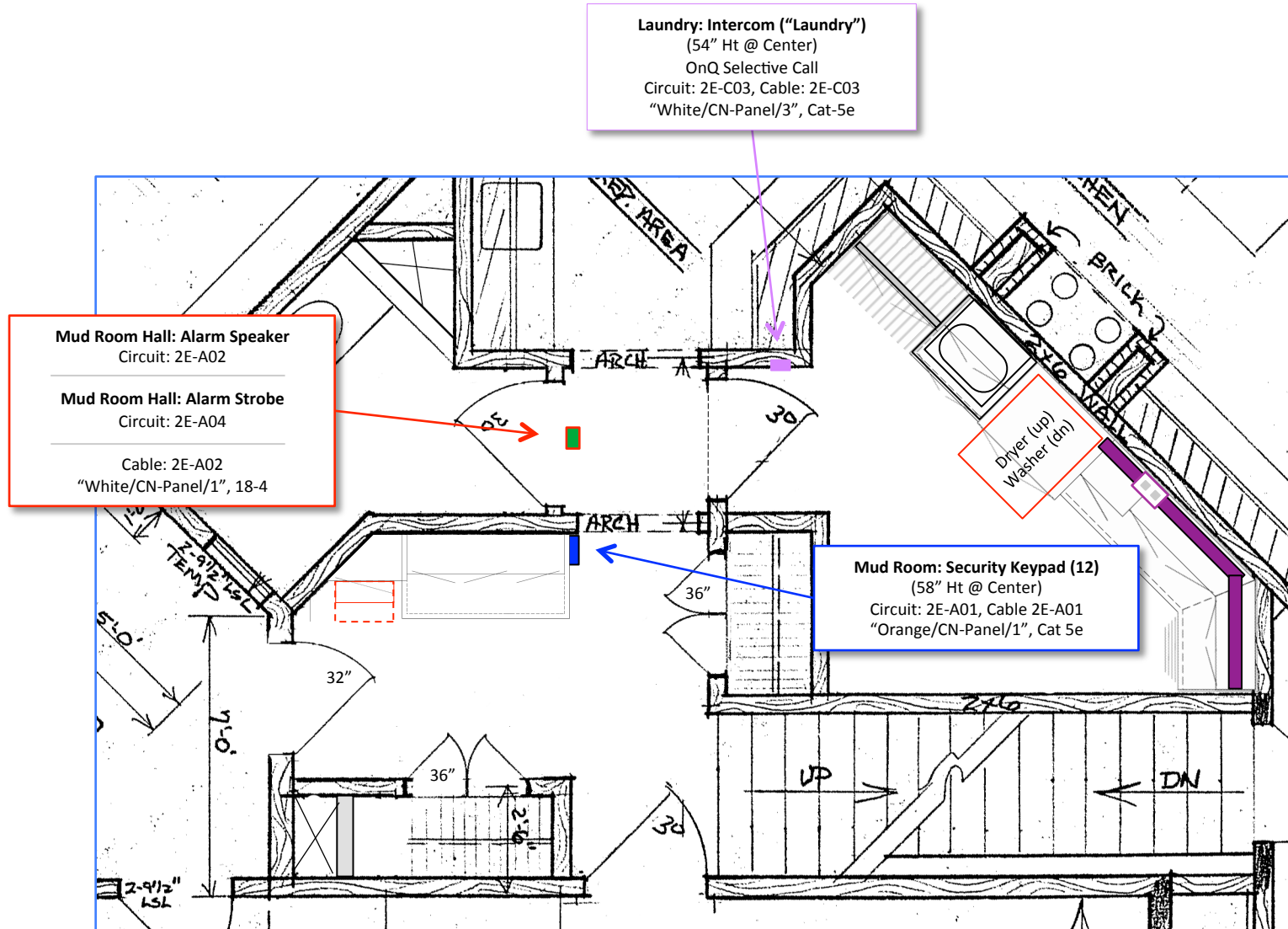
Power Wiring



(x) = NC Door/Window Sensor
(Concealed Reed)



Sensors 2



Powder Room: Background Audio (Zone 2-6b)
 West Circuit: 2E-R03 (L)

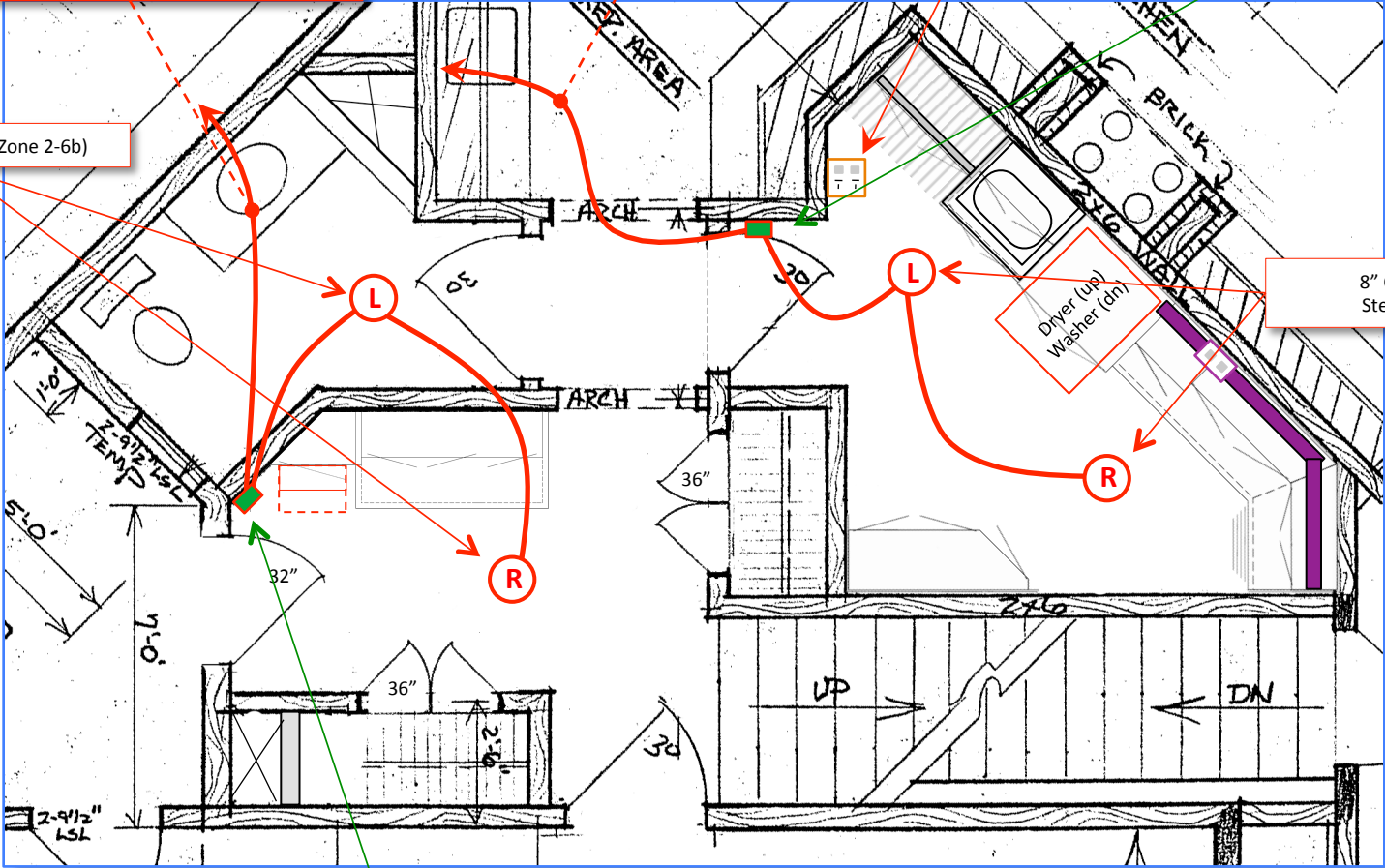
Mud Room: Background Audio (Zone 2-6b)
 East Circuit: 2E-R04 (R)
 Cable: 2E-R03/04, 16-4
 "White/E-Rack/1"

Laundry: Background Audio (Zone 2-6a)
 West Circuit: 2E-R01 (L)
 East Circuit: 2E-R02 (R)
 Cable: 2E-R01/02, 16-4
 "White/E-Rack/1"

Cable Port "2E-01"
 LAN: 2E-C01
 Phone: 2E-C02

Audio Volume
 (72" High @ Center)

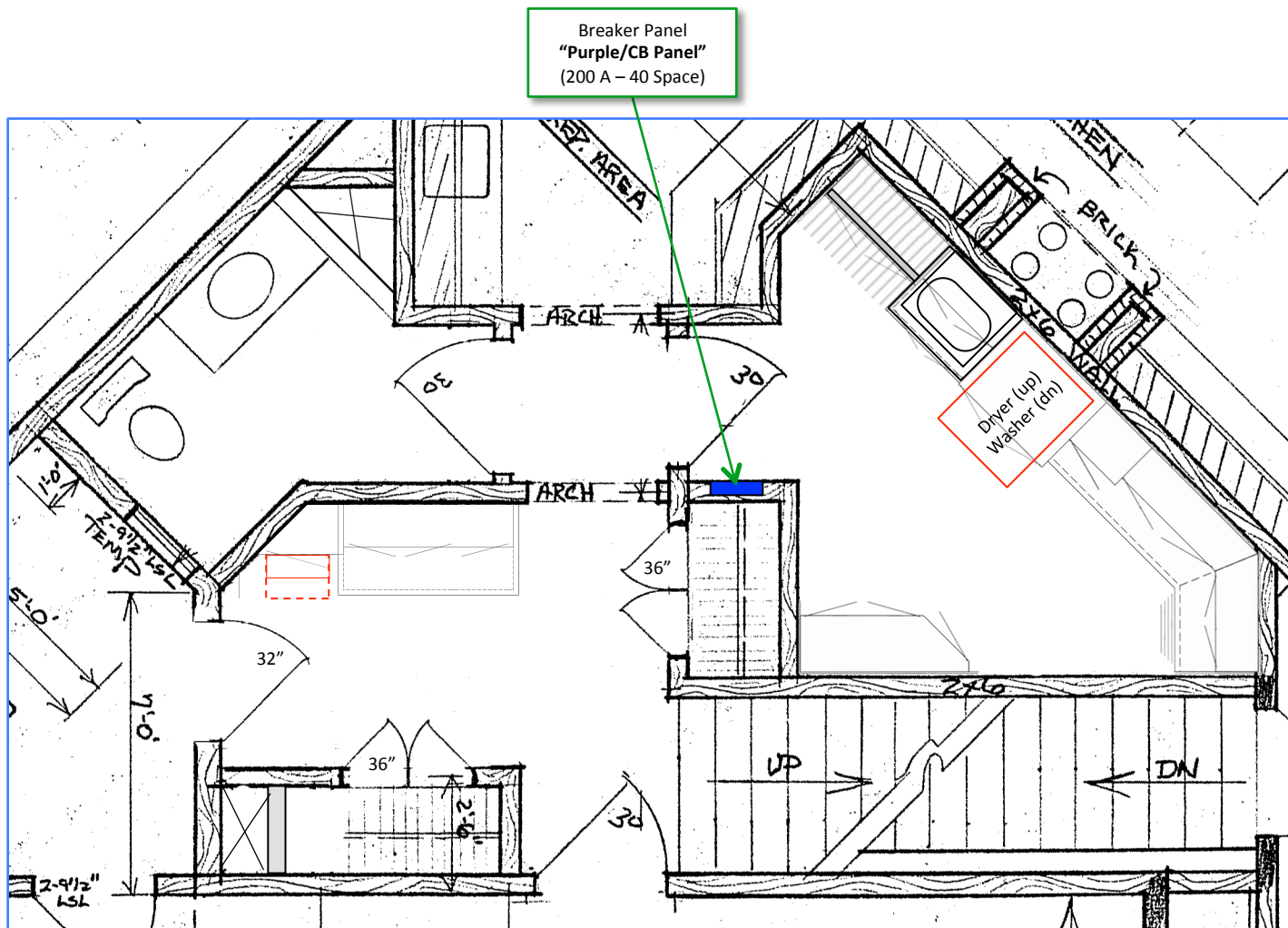
8" Ceiling Speakers (Zone 2-6b)

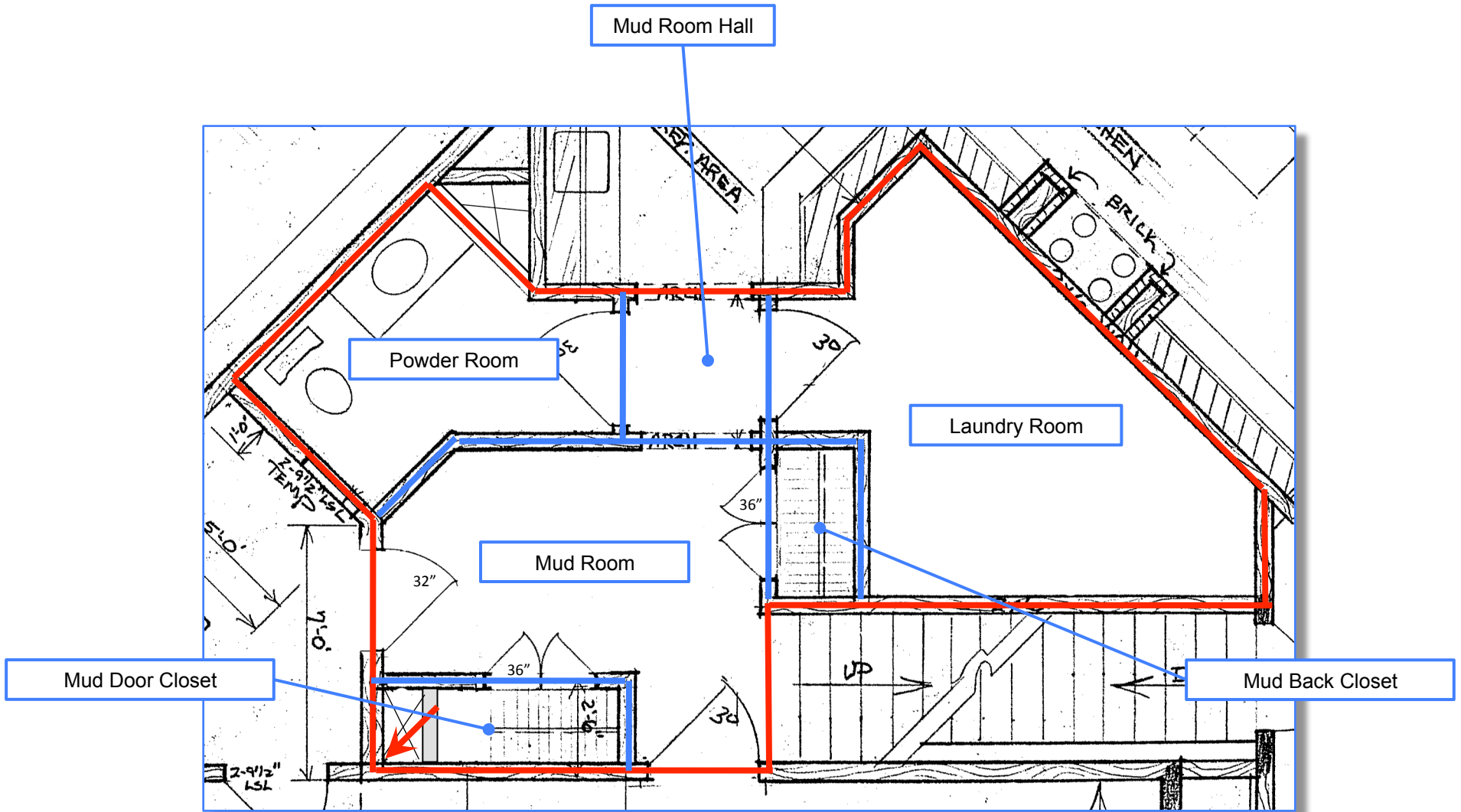


8" Ceiling Speakers
 Stereo (Zone 2-6a)

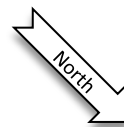
Audio Volume
 (72" High @ Center)

Communications





— = Region Boundary



↘ = Region Anchor Point (Corner)

Appliance	Dimensions	Supply Circuit	Make	Model
Washer	38" H x 27" W x 33.5" D	120 V @ 15/20 A (outlet)	Whirlpool	WFW9450W
Dryer	38"H x 27" W x 32.5" D	240 V @ 30 A (3 or 4 wire)	Whirlpool	WED9450WR
Tub	24" W x 21" D (Tub: 21.5" W x 13" D)		Kohler	Single
Ironing Center		120 V @ 15 A	Nutone	
Boot Dryer	65" H x 17" W x 6.25" D	120 V @ 15 A	Cyclone	

Representative Appliances

